



# Editing a Tab Top MLR

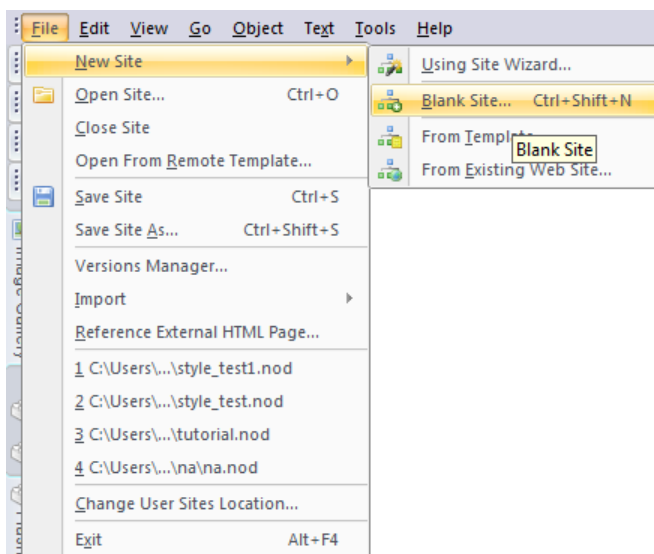
NetObjects Fusion 11 has powerful Ajax tools built in. In this tutorial we will be customizing the images used for a Tab Top MLR to match your Website.

Difficulty – **Intermediate**

Materials - [LINK](#)

## *Preparation*

Create a new blank site in NetObjects Fusion 11. From the File menu select New Site > Blank site.



Name your site MLR\_test.

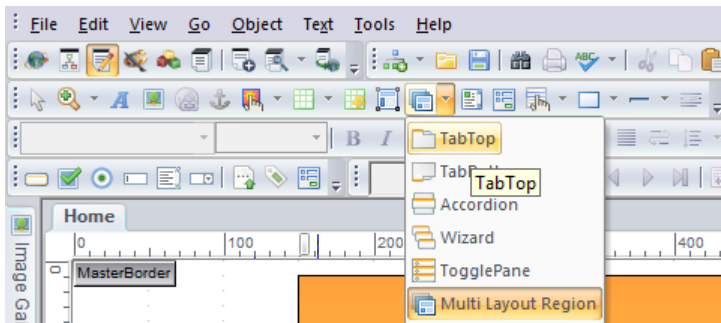
## Step 1

Select the Page view from the View bar.



## Step 2

Place a tab-top MLR on your page. The tab top MLR tool is located in the standard toolbar.



## Step 3

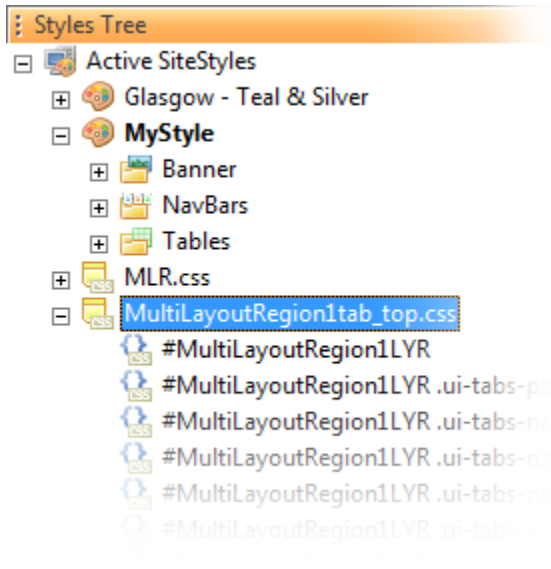
Click to the Style view from the View menu.



In the Style Tree you will see two new CSS folders under your Active SiteStyles branch. One named MLR.css and the other MultiLayoutRegion1Tab\_top.css. Since we want to edit the individual MLR rather than globally, we will be editing the MultiLayoutRegion1Tab\_top.css elements.

## Step 4

Select the tab\_top folder in the Style Tree.



## Step 5

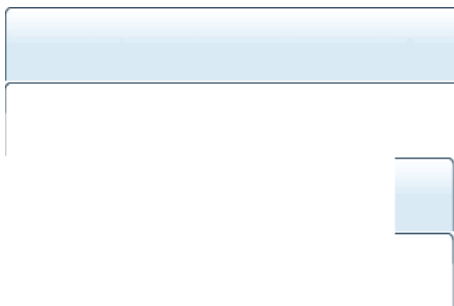
You will be taken to the Selectors tab, click the TabTop selector.



The Selector will expand to show all editable elements of the MLR.

## Step 6

The tab-top MLR uses a png image and CSS for positioning of the tabs. See below for an example:

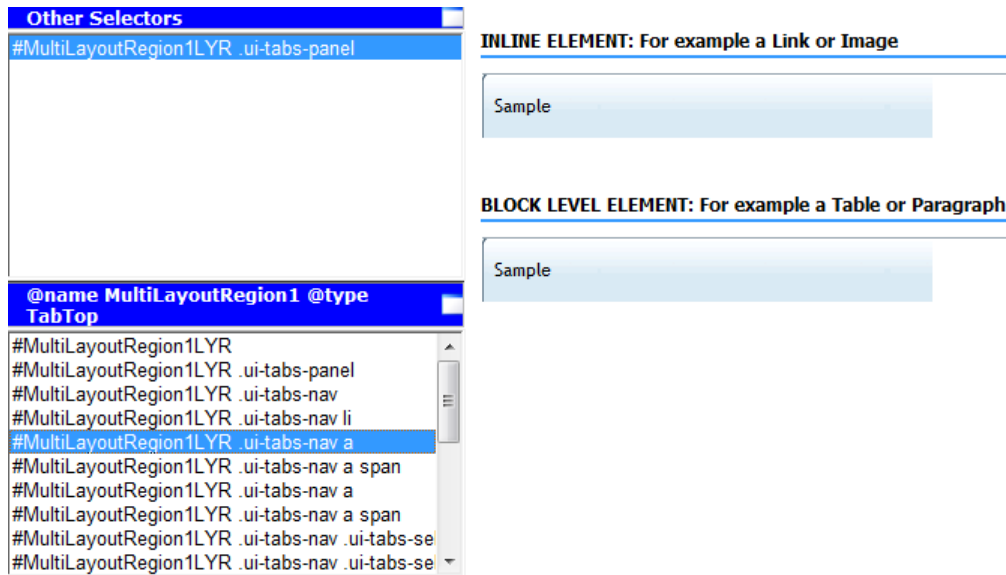


You should have an editable copy of this image from the link under the materials section at the beginning of this tutorial. You can edit this image to suit the look of your SiteStyle and Website in the image editor of your choice or directly in NetObjects Fusion.

*Please look to the [Image Adjustments tutorial](#) for editing the tab top image in NetObjects Fusion.*

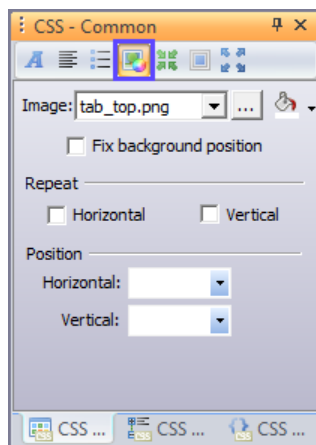
## Step 7

Under the tab top Selector in the Style view, select the `.ui-tabs-nav` a element.



## Step 8

Look to the CSS – Common properties palette, located to the far right of the Style view and select the Background tab.



Notice the image in use, tab\_top.png. Click the Browse button to locate our new image a\_1.png.

## Step 9

Follow the same steps to update .ui-tabs-nav a span element manually.

**Other Selectors**

BODY

**@name MultiLayoutRegion1 @type TabTop**

- #MultiLayoutRegion1LYR
- #MultiLayoutRegion1LYR .ui-tabs-panel
- #MultiLayoutRegion1LYR .ui-tabs-nav
- #MultiLayoutRegion1LYR .ui-tabs-nav li
- #MultiLayoutRegion1LYR .ui-tabs-nav a
- #MultiLayoutRegion1LYR .ui-tabs-nav a span
- #MultiLayoutRegion1LYR .ui-tabs-nav a
- #MultiLayoutRegion1LYR .ui-tabs-nav a span
- #MultiLayoutRegion1LYR .ui-tabs-nav .ui-tabs-selected a
- #MultiLayoutRegion1LYR .ui-tabs-nav .ui-tabs-selected a

**INLINE ELEMENT: For example a Link or Image**

Sample

**BLOCK LEVEL ELEMENT: For example a Table or Paragraph**

Sample

## Step 10

Select the .ui-tabs-panel element.

**Other Selectors**

**@name MultiLayoutRegion2 @type TabTop**

- #MultiLayoutRegion2LYR
- #MultiLayoutRegion2LYR .ui-tabs-panel
- #MultiLayoutRegion2LYR .ui-tabs-nav
- #MultiLayoutRegion2LYR .ui-tabs-nav li
- #MultiLayoutRegion2LYR .ui-tabs-nav a
- #MultiLayoutRegion2LYR .ui-tabs-nav a span
- #MultiLayoutRegion2LYR .ui-tabs-nav a
- #MultiLayoutRegion2LYR .ui-tabs-nav a span
- #MultiLayoutRegion2LYR .ui-tabs-nav .ui-tabs-se
- #MultiLayoutRegion2LYR .ui-tabs-nav .ui-tabs-se

**INLINE ELEMENT: For example a Link or Image**

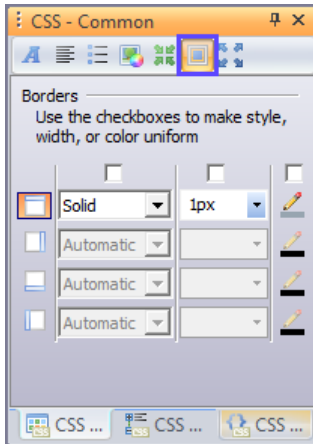
Sample

**BLOCK LEVEL ELEMENT: For example a Table or Paragraph**

Sample

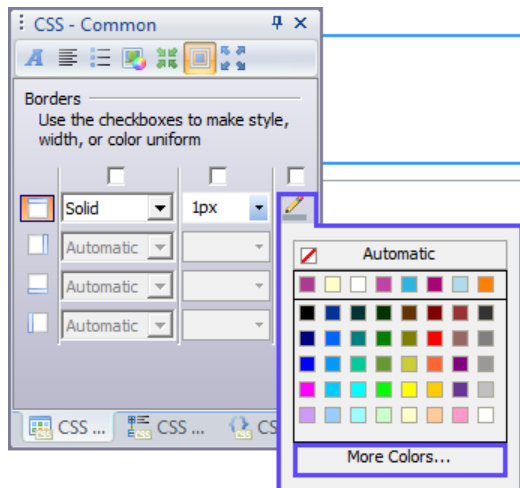
## Step 11

Click to the Borders tab in the properties palette.



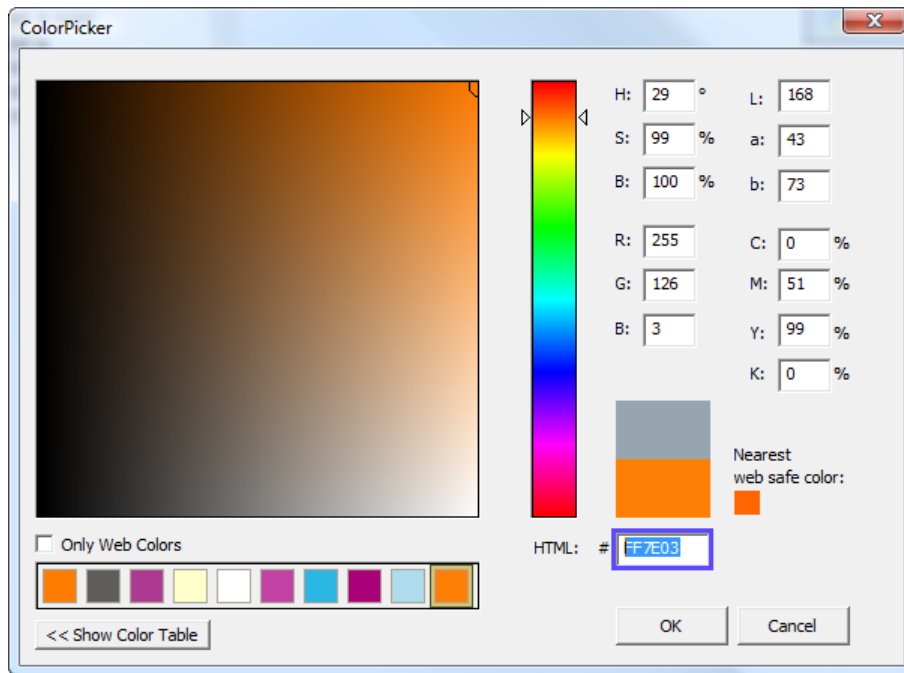
## Step 12

Notice the 1px Solid line for the top border. Update the color by clicking the pencil icon to the far right. For this tutorial, select the More Colors option.



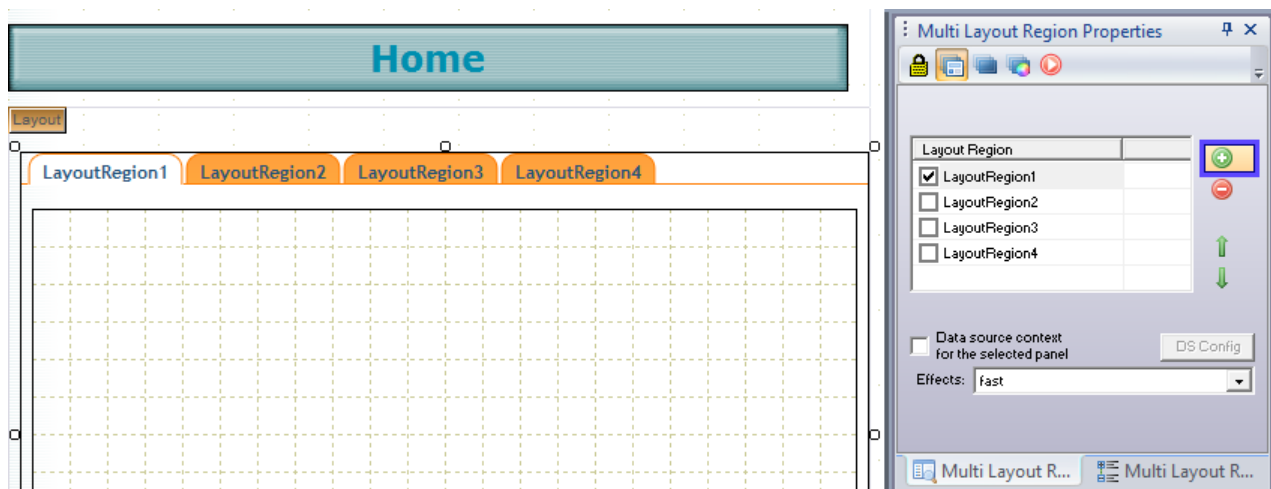
## Step 13

The ColorPicker dialog window will open. In the #HTML field type FF7E03 then click OK.



## Step 14

Click to the Page view to view your updated MLR. Select the MLR and add a few new tabs from the properties palette by selecting the + icon.



## Wrapping Up

We have learned how to edit the MLR images to accommodate the color scheme of your Website. Please look to our Intermediate and Advanced tutorials on the MLR shortly.